



Woods House, 7 Gatliff Road
London SW1W

GARTONJONES.COM



Woods House, 7 Gatliff Road London, SW1W

£625 Per Week

GARTON JONES.COM

8 Gatliff Road
Grosvenor
Waterside
Chelsea
London
SW1W 8DP

Lettings:
+44 (0) 20 7730 5007
gws@gartonjones.com
www.gartonjones.com

A One DOUBLE BEDROOM apartment to rent of approx. 489sq.ft (45.4sq.m) on the 11th floor (with lift) of Woods House, on Grosvenor Waterside development in Chelsea. This FURNISHED property further benefits from an open plan reception room with a JULIETTE STYLE BALCONY with FAR REACHING VIEWS of the London skyline. There is modern kitchen, a bathroom, storage including built in wardrobes to the bedroom and wood flooring. 24 HOUR CONCIERGE. On-site Sainsbury's Local, coffee shop and private kids club. SLOANE SQUARE & VICTORIA station with Gatwick Express are within walking distance. Battersea Park is also just a short stroll away across Chelsea Bridge.

- 489 Sq.ft (45.4 Sq.m)
- 1 Double Bedroom
- Open Plan Reception Room
- Modern Kitchen
- Bathroom
- 24 Hour Concierge
- Juliette Style Balcony
- On-Site Residents Gym & Spa Facilities (Payable)
- On-Site Sainsbury's, Creche, Coffee Shop & Purple Dragon Private Kids Club
- Walking Distance To Sloane Square & Victoria Station



Available via Garton Jones on-site office at Grosvenor Waterside (underneath Bramah House).

Please note furniture may differ to that shown in the current photos

5 week deposit required. 12 month minimum term.

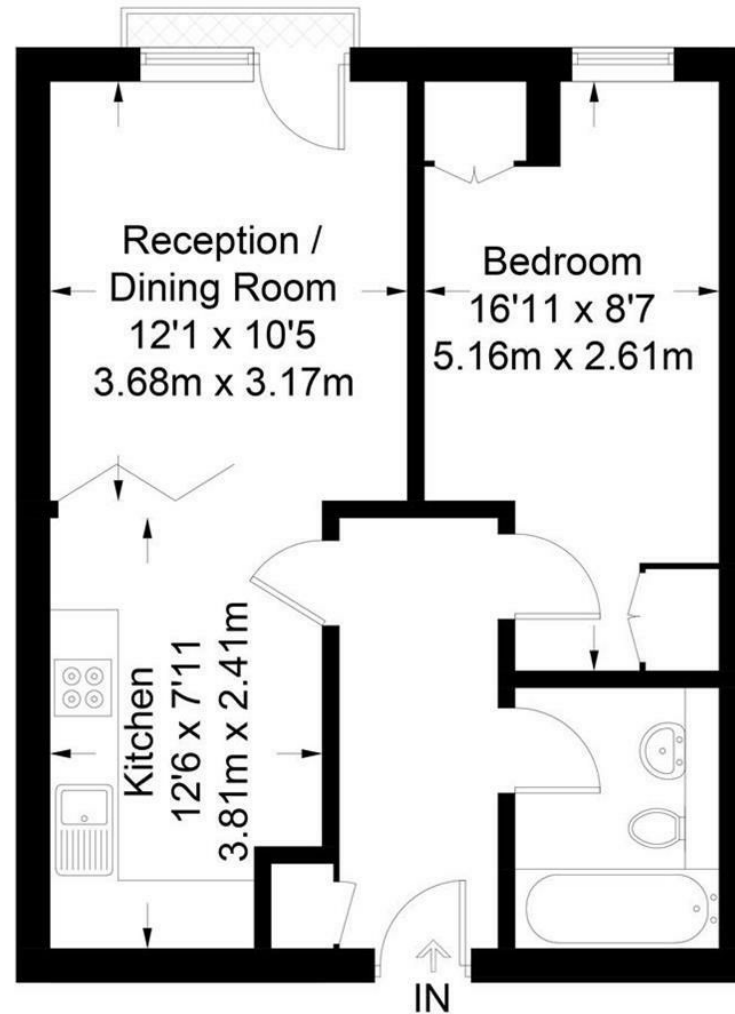
Council Tax: Westminster Council (band D)

EPC Rating: C (79)



Woods House

Approximate Gross Internal Area = 489 sq ft / 45.4 sq m



Not to scale, for guidance only and must not be relied upon as a statement of fact.
All measurements and areas are approximate only and have been prepared in accordance with the current edition of the RICS Code of Measuring Practice.

